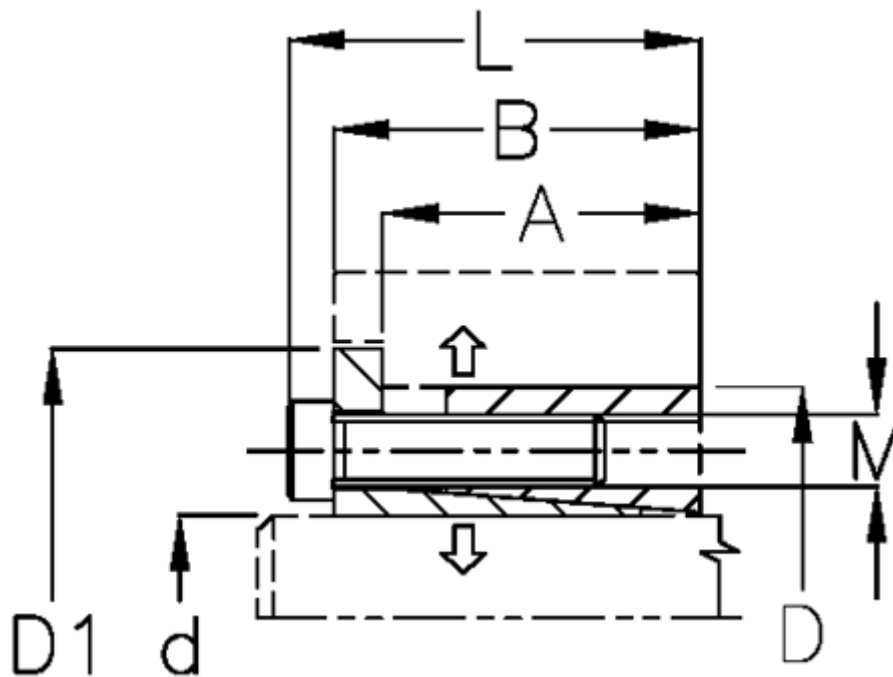


Article number: 434600028

Description: Rota-fix shaft-hub connection ES 28x55
Steel

Note: Self centering - high transmissible torque. During the clamping, the hub can axially displace.

Measures



A mm	= 22.0	M mm	= M6
B mm	= 28.0	P N/mm ² surface pressure on shaft/hub	= 90
D1 mm	= 61	Surface roughness	= -
d H8 mm	= 28	T N m torque	= 450
D mm	= 55	Ts N m bolt tightening torque	= 17
Fit tolerance	= -		
F kN torque	= 32		
L mm	= 34		